



# Nor'wester newsletter

Issue #688 November 14, 2019

## In This Issue

Welcome new member: Port of Olympia  
Port of Everett awarded \$15M grant for mill site development  
Port of Longview contributes big to community, region  
Plums and cherries and pears - oh my!  
Ballard Locks valve replacement project on track  
Mark your calendar!

## Welcome new member: Port of Olympia

---

With a mission of creating economic opportunities by connecting Thurston County to the world by air, land and sea, the [Port of Olympia](#) has a proud history in Thurston County, Washington. It serves the community in a

wide variety of ways, leading the way for many of the area's economic development efforts. From the commercial center at NewMarket Industrial Campus and the diversified specialty Marine Terminal to the vibrant Swantown Marina & Boatworks and the strategically located Olympia Regional Airport, the Port of Olympia is committed to fostering economic growth of the South Puget Sound region and serving the needs of global customers. Essentially one business with four divisions, the Port promotes economic development through its business operations and economic development tools.



# PORT of OLYMPIA

---

## Port of Everett awarded \$15M grant for mill site development

---

Congratulations to the Port of Everett for receiving a \$15.5 million U.S. Department of Transportation [Better Utilizing Investment to](#)



[Leverage Development \(BUILD\) grant](#) to obtain and put the former Kimberly-Clark mill site back to use.

PNWA has long supported the Port's efforts to acquire this property, [sending letters of support to the Department of Transportation](#) highlighting the critical nature of this section of Everett's waterfront. Investing in our region's working

waterfronts creates more jobs and economic development for our communities, and we can't wait to see what the future brings for Washington's fastest growing county.

---

## Port of Longview contributes big to community, region

---

The Port of Longview released its most recent [economic benefits analysis](#) last month, and the news is all good for the local community and the region. The Port generated a record \$679 million in direct business revenue and re-spending within the community - an increase of 53% since 2012 - and the Port's total value to the region was measured at \$2.8 billion.



---

## Plums and cherries and pears - oh my!

---



The Pacific Northwest tends to be better known for our apples, wheat and seafood, but this month the Port of Vancouver USA [showcases its tenant Northwest Packing Company](#), which processes and distributes a wide variety of canned and concentrated fruit products to North America, Asia and Australia.

---

## Ballard Locks valve replacement project on track

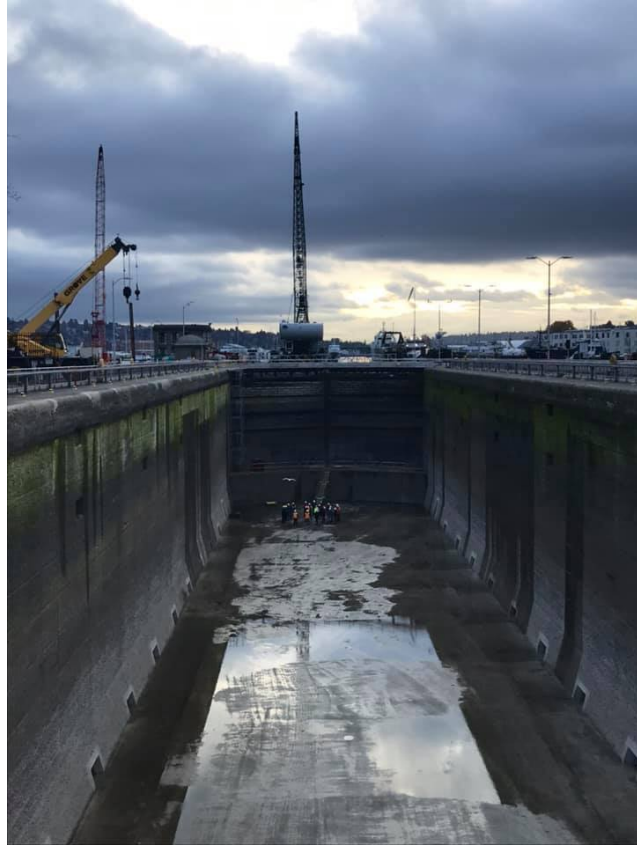
---

The PNWA-supported U.S. Army

Corps of Engineers project to [replace the 102-year-old Stoney Gate Valves](#) in the Hiram M. Chittenden Locks large chamber is on track.

Removal of the operating machinery, motor, gate and other components started last month and went as scheduled - in some cases faster than anticipated. The gate guide removal encountered an issue due to the original as-built drawings not showing correct site conditions. The Corps' contractor, IMCO, increased work hours and were able to remove the problematic gate guides and get back on schedule.

Installation is in full swing. The new sill guide is installed, new hydraulic power unit in place and new guides are being bolted in. Testing of the new control panels is underway and the Corps and contractor are planning the new system test as scheduled at the end of the month.



---

## Mark your calendar!

---

### **PNWA Holiday Open House**

Tuesday, Dec. 3

4-7 p.m.

PNWA Office at Hollywood Station

[Details here](#)

### **Western Washington Regional Meeting**

Wednesday, Feb. 19

1-3:30 p.m.

Port of Seattle

[RSVP here](#)

### **Inland Empire Regional Meeting**

Monday, Feb. 24

1-3:30 p.m.

Port of Benton

[RSVP here](#)

### **Columbia River and Coast Regional Meeting**

Friday, Feb. 28

9-11:30 a.m.

Port of Kalama

[RSVP here](#)

**PNWA Mission to Washington, D.C.**

Sunday-Thursday, Mar. 15-19  
The Madison Hotel  
Registration opens Monday, Dec. 16

[PNWA Website](#)

[About PNWA](#)

[Action Agenda](#)

[PNWA Events](#)

[Contact Us](#)

© Pacific Northwest Waterways Association

[Follow us on Facebook](#)

