

# WALLA WALLA DISTRICT NAVIGATION UPDATE



Little Goose  
Floating Guide Wall  
Cable Replacement,  
January 2022



**BUILDING STRONG®**

# NAVIGATION OUTAGE UPDATE

**2023 Outage** begins 4 March; 2 weeks everywhere except:

- Little Goose 3 weeks for electrical testing and culvert repair scoping

**2024 Outage** runs 14 Jan – 30 Mar 2024

- Formerly one significant project, now 4 major O&M actions



# GETTING THE MOST OUT OF THE 2024 OUTAGE



1948-vintage 480V electrical breaker at McNary

## MAJOR WORK:

- McNary DS Gate Gudgeon Anchors (10 weeks, ~\$11M)
- Lower Monumental Nav Power and Controls (10.5 weeks, ~\$10M)
- McNary Nav Power and Controls (9 weeks, \$18.5M)
- Little Goose Lock Culvert Concrete Repairs (10 weeks, \$327k)
- Lower Granite Floating Guide Wall Timber Replacement (\$3.2M)



# RISKS TO OUR OUTAGE PLANS

- Awarding contracts on time
- McNary derrick cranes operational to place stoplogs
- Supply chain issues
- Cost growth



2017 McNary Downstream Gate weld repairs

1950-Vintage Derrick Crane



# FLOATING GUIDE WALL CABLES

- Service and safety cables installed in 1986 caused numerous outages at all Snake River locks over past two years
- Old cables were a non-standard size with unique-sized connectors
- Dredging needed to find anchor points at all locations except Lower Granite
- Divers worked in depths >100'

2020 Lower Monumental broken floating guide wall cable



Dam	Current Condition
Ice Harbor	New cables; Leaks into cell #1 needs repair
Lower Mon.	New cables
Little Goose	New cables; Landside anchor to be replaced
Lower Granite	January cable replacement planned; Temp high-strength rope functions as service cable



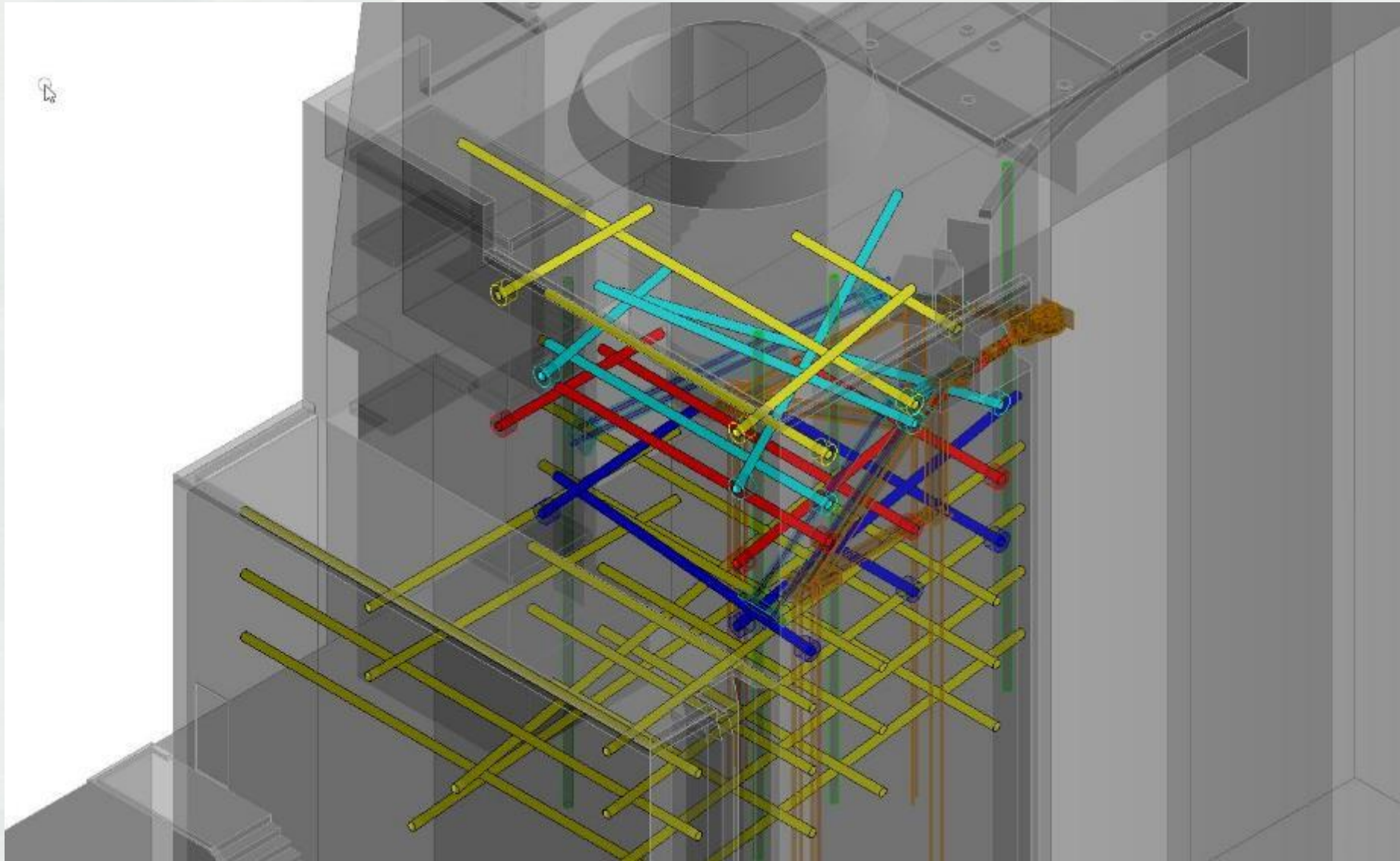
# SNAKE/CLEARWATER CONFLUENCE DREDGING

- On schedule to award dredge contract 15 Sep
- Dredge window is 15 Dec-1 Mar
- Estimated dredge quantities ~ 260,000cy
- Dredge footprint includes access channels to port facilities and berthing areas
- Permitting actions for dredging are ongoing



**BUILDING STRONG®**

# QUESTIONS?



**BUILDING STRONG®**